



MONTHLY
PROJECT
DELIVERY
REPORT

CRESCENT CITY CONNECTION DIVISION
LOUISIANA DEPARTMENT OF TRANSPORTATION AND DEVELOPMENT

JANUARY 2012



TABLE OF CONTENTS



| | |
|---|-----------|
| Table of Contents | 2 |
| <hr/> | |
| Department Updates | 3 |
| Police Department | 4 |
| Bridge Maintenance | 5 |
| Toll Collections | 6 |
| Customer Service | 7 |
| Marine Operations and Maintenance. | 8 |
| Engineering | 9 |
| HNTB CCCD Trust Indenture and Engineering Project | 10-11 |
| <hr/> | |
| Major Capital Projects | 12 |
| Peters Road Upgrade & Extension | 13 |
| MacArthur Interchange | 14 |
| 4th Street Extension | 15 |
| Barataria Boulevard (LA 45) Widening | 16 |
| General DeGaulle Traffic Improvements | 17 |
| General DeGaulle Drainage Improvements | 18 |

MONTHLY PROJECT DELIVERY REPORT

This report features Crescent City Connection Division (CCCD) capital project progress reports as well as six key department updates that are considered relevant to the traveling public in the region and a status update of the HNTB CCCD Trust Indenture and Engineering Project.

Every attempt is made to present the most accurate and up-to-date information available. Information presented in this report is current for the month of December 2011.



DEPARTMENT
UPDATES

JANUARY 2012

POLICE DEPARTMENT

Overview

The mission of the Crescent City Connection Police Department (CCCPD) is to protect life and property while providing for the safe and efficient passage of customers utilizing the various transportation systems within the Department's jurisdiction and region.

Comprised of 25 commissioned officers and four civilian employees, the CCCPD is a statutorily created police agency providing traffic control and law enforcement services governed by policies, procedures, and doctrine that conform to current law enforcement best practices.

Led by Chief Peter E. Maggiore, the CCCPD's jurisdiction includes the US Hwy. 90-B Crescent City Connection (both spans) and all approaches, the Pontchartrain Expressway from the bridges to the Broad Street overpass in Orleans Parish, the Westbank Expressway in Orleans and Jefferson Parish, the land under the bridges and expressways, the ferries and ferry landings in Orleans, Jefferson, and St. Bernard parishes, several surface streets in the immediate vicinity of the CCC and Behrman Memorial Park.

Open Positions

Commissioned Officers: 0; Civilians: 0

Training Initiatives

- One officer is scheduled to attend police applicant background investigation training in January.
- The CCC Police have hired two commissioned officers. These officers are scheduled to begin field training on January 23.

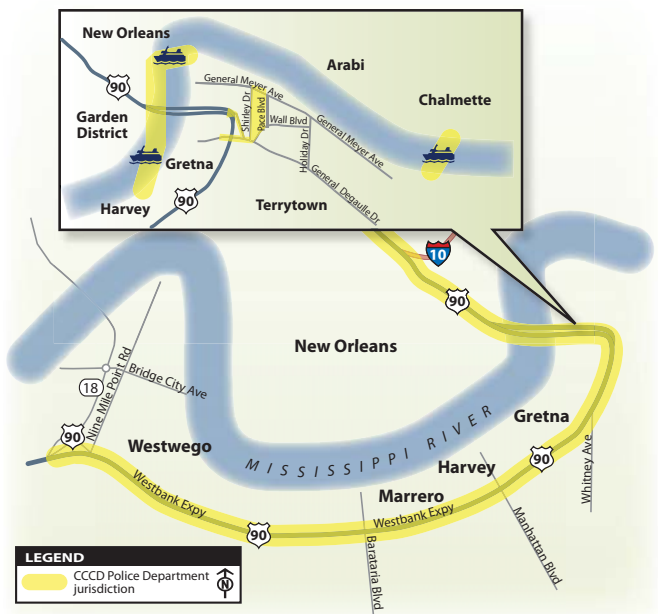
Special Events

CCC Police provided six officers for security and crowd control at the Canal Street Ferry during New Year's Eve festivities. No major incidents were reported during this event.

| <i>Incident Management - Roadways</i> | Dec. 2011 | Dec. 2010 |
|---|------------------|------------------|
| <i>Auto crashes investigated</i> | 102 | 137 |
| <i>Arrests (DWI, traffic, warrants, etc.)</i> | 37 | 70 |
| <i>Assisted other agencies</i> | 19 | 17 |
| <i>Pedestrians removed</i> | 36 | 28 |
| <i>Traffic enforcement (citation, warnings)</i> | 882 | 623 |
| <i>Motorists assist. (breakdowns, flat tires, etc.)</i> | 459 | 368 |

| <i>Incident Management - Ferries</i> | Dec. 2011 | Dec. 2010 |
|---|------------------|------------------|
| <i>Auto crashes investigated</i> | 0 | 3 |
| <i>Arrests (municipal, warrant, etc.)</i> | 2 | 0 |
| <i>Assisted other agencies</i> | 0 | 1 |
| <i>Security checks of vessels and landings</i> | 305 | 275 |
| <i>Motorists assist. at vessels and landings (breakdowns, flat tires, etc.)</i> | 11 | 4 |

CCCD Police Department Jurisdiction



Contact Information

| | |
|-----------------------------|-------------------------------------|
| <i>Chief Peter Maggiore</i> | <i>Dep. Chief J. Lyons Hale III</i> |
| Peter.Maggiore@LA.gov | Johnson.Hale@LA.gov |
| (504) 376-8180 | (504) 376-8180 |

2001 Mardi Gras Boulevard
 Post Office Box 6297
 New Orleans, LA 70174-6297

BRIDGE MAINTENANCE

Overview

The mission of the Crescent City Connection Division Bridge Maintenance Department is to provide for the safe and efficient passage of those utilizing the bridges, roadways and buildings maintained under CCCD.

The Bridge Maintenance Department strives to provide this service to the public in a safe, courteous and professional manner.

Bridge Maintenance Responsibilities

Led by Bridge Maintenance Foreman Richard Kimball, the dedicated Bridge Maintenance employees provide general maintenance for six buildings, 12 toll booths and more than 13 miles of CCCD roadway, including landscaping.

The Bridge Maintenance Department maintains the buildings that house the equipment and the dedicated men and women of the CCCD. The department also handles maintenance on the bridges, a pumping station and service station. In addition, the department conducts proactive building facilities/safety inspections daily to ensure proper operation of CCCD.

The Bridge Maintenance Department also monitors the landscape for any issues that may require immediate intervention. The department is also responsible for the documentation and scheduling of any road and bridge issues and resolutions, respectively.

In addition to the normal scheduled and unscheduled maintenance activities, the Bridge Maintenance Department supports other departments in the common goal of creating a safe environment for employees to work in and providing safe travel for the public on the CCC.

Bridge Maintenance Headcount

| | |
|--------------------------------|---|
| Current Maintenance Resources: | 7 |
| Open Positions: | 1 |

Summary of Monthly Maintenance Activities

| | |
|---|-----|
| Work requests processed | 51 |
| Scheduled maintenance activities (in man hours) | 390 |
| Unscheduled maintenance activities (in man hours) | 380 |
| Grass cutting: (in man hours) | 16 |
| Litter pick-up: (in man hours) | 48 |

Monthly Maintenance Inspections (in man hours)

| | |
|-------------------------------------|----|
| Building inspections | 30 |
| Roadway inspections | 26 |
| Equipment inspections | 10 |
| Grounds and landscaping inspections | 30 |
| Safety inspections | 4 |

Completed Activities in December

- Painted parking lots at the DMV, police and Administration buildings.
- Painted at the service station.
- Pressure washed the toll plaza.
- Performed fence repairs at a storage area.

Scheduled Activities in January

- Installing new trash cans along the Westbank Expressway.
- Performing roof repairs at the Administration building.
- Performing yearly safety inspections.
- Cleaning toll booths.
- Repairing and replacing signs on bridges.

Contact Information

| | |
|--|--|
| Richard Kimball Bridge Maint. Foreman Richard.Kimball@LA.gov (504) 376-8170 | Shannon Boudoin Bridge Maint. Clerk (504) 376-8167 |
|--|--|

2001 Mardi Gras Boulevard
Post Office Box 6297
New Orleans, LA 70174-6297

TOLL COLLECTIONS

Overview

The mission of the Toll Collections Department is to deliver transportation and public works systems that enhance quality of life and facilitate economic growth and recovery, while effectively delivering products and services in a timely manner with improved performance, customer service, and public confidence.

The Crescent City Connection is the fifth busiest toll bridge in the U.S.

In FY 2009, the Toll Collections Department averaged more than 2.6 million tolls per month, of which 48 percent were hand-to-hand transactions.

Toll collection employees serve as front line customer service and revenue assurance representatives. They also act as safety coordinators by accurately and reliably relaying detailed safety concerns customers share with them on a daily basis.

They strive to accommodate requests for travel directions by offering brief, accurate information to assist regional visitors and keep traffic flowing.

The Crescent City Connection Division Toll Collections Department is a 24- hours-per-day, seven-days-a week-operation.

Toll Collections Headcount

The Toll Collections Department currently has 39 employees consisting of:

| | |
|---|-----------|
| <i>Toll Captain:</i> | 1 |
| <i>Responsible for overall Bridge Toll Operations</i> | |
| <i>Toll Sergeant Supervisors :</i> | 5 |
| <i>Oversee daily operations of the Toll Department</i> | |
| <i>Toll Collectors:</i> | 33 |
| <i>Collect cash tolls from customers, collect scrips, vehicle passes, and process in-lane bill payments as a convenience to toll tag account customers.</i> | |

Open Positions

- None

Last Month's Tolls (unaudited)

| | |
|----------------------------------|------------------|
| <i>AVI transactions</i> | 1,332,164 |
| <i>Hand-to-hand transactions</i> | 1,104,616 |

Training Initiatives

- Daily Safety Huddles are held at the beginning of each Toll Collection shift. Routine items discussed are:
 - Current and expected weather conditions, and safety concerns related to adverse conditions.
 - Notification of major events in the area enabling our toll collection employees the ability to quickly and accurately provide toll patrons with directions, if asked.

Contact Information

Gail Duplessis, Toll Captain
Gail.Duplessis@LA.gov
(504) 376-8100

2001 Mardi Gras Boulevard
Post Office Box 6297
New Orleans, LA 70174-6297

CUSTOMER SERVICE

Overview

The Customer Service Department's mission is to deliver transportation and public works systems that enhance quality of life and facilitate economic growth and recovery. The department strives to deliver products and services in a timely manner with improved performance, customer service and public confidence.

Customer service representatives are dedicated to providing assistance, answers, and knowledge in all aspects of customers' needs. Representatives manage multiple customer contact channels and treat every customer with the respect and professional attention they require to satisfy their needs.

Customers' needs typically involve account transactions and information requests, questions on opening and closing customer accounts, violation payments and appeal options.

The department also receives questions on how customers can self-serve through Interactive Voice Response (IVR), an automated phone technology that assists with customer service calls, and the website to manage their account and make payments.

The Customer Service Department is divided into two sections. Section one is responsible for providing customer service to walk-in customers and those customers who choose to make account payments at the toll lanes. Section two is responsible for serving customers who call, e-mail, fax or send in their requests via website or mail.

Customer Service Headcount

| | |
|--|----------|
| <i>Current customer service center resources</i> | 6 |
| <i>Current customer call center resources</i> | 7 |
| <i>Current customer call center resources (HNTB)</i> | 8 |
| <i>Current receptionists resources</i> | 2 |
| <i>Open positions</i> | 0 |

| | |
|------------------------------------|---------------|
| <i>December Customer Contacts:</i> | 22,577 |
| <i>Walk-in customers</i> | 4,644 |
| <i>Lane payments</i> | 3,467 |
| <i>Incoming calls</i> | 11,197 |
| <i>Faxes</i> | 93 |
| <i>Emails</i> | 490 |
| <i>Fulfillments</i> | 386 |
| <i>Mail</i> | 2,308 |

December Department Sales

| | |
|------------------------------------|--------------|
| <i>Case transponders</i> | 941 |
| <i>Sticker transponders</i> | 1,189 |
| <i>Ferry scrips (book of 30)</i> | 53 |
| <i>Vehicle scrips (book of 25)</i> | 14 |

Training Initiatives

- Procedural training is performed in conjunction with the department's weekly team meeting.

Contact Information

Dannell Ortego, Customer Service Center Manager
Dannell.Ortego@LA.gov
(504) 376-8100

2001 Mardi Gras Boulevard
Post Office Box 6297
New Orleans, LA 70174-6297

MARINE OPERATIONS & MAINTENANCE

Overview

8

The mission of the Crescent City Connection Division Marine Department is to provide for the safe and efficient passage of those utilizing the ferries operated by the CCCD. The department strives to provide this service to the public in a safe, courteous, and professional manner.

The employees of the Crescent City Connection Marine Department comprise two units: Operations and Maintenance.

Operations

Led by Bertrand W. Donnes, Jr., Marine Operations Superintendent 2, the dedicated Marine Operations employees operate and maintain the six ferry vessels providing service to the general public at the Gretna to Canal Street, Algiers Point to Canal Street, and Lower Algiers to Chalmette crossings.

Maintenance

USCG inspections: 3 conducted (1 routine, 2 special)

| <i>Maintenance activities</i> | |
|-------------------------------|--------------|
| <i>Planned man hours:</i> | 1,223 |
| <i>Unplanned man hours:</i> | 339 |
| <i>Safety Inspections:</i> | 2 |
| <i>Safety Meetings:</i> | 1 |

Marine Department Headcount

| | |
|--|-----------|
| <i>Current operations & maintenance positions allocated:</i> | 79 |
| <i>Open operations positions:</i> | 5 |
| <i>Open maintenance positions:</i> | 0 |

Training Initiatives

Hazard Communication training is still to be scheduled for all Marine Operations and Maintenance employees. All supervisors will be participating in Partners in Leadership. All helpers and repairmen will be attending a front end loader class. Arrangements are being made for training to be done by other DOTD Districts.

Summary of Monthly Activities

| | |
|---|----------------|
| <i>Scheduled crossings:</i> | 4,752 |
| <i>Actual crossings:</i> | 4,410 |
| <i>Percent scheduled trips completed:</i> | 72.8% |
| <i>Total passengers:</i> | 168,155 |
| <i>Total vehicles:</i> | 86,146 |

All ferry vessel crews attended Customer Service training at the beginning of December.

Special Events

The ferry at Algiers Point operated extended hours on New Year's Eve to accommodate the crowds for festivities in the French Quarter and the fireworks display on the river.

Scheduled Activities Next Month

- The M/V Capt. Neville Levy is not operable due to electrical issues involving parts that are no longer available. The repairs are expected to be complete in January, and the USCG will finish inspecting the vessel. Once this vessel is returned to service, the M/V Sen. Alvin T. Stumpff will undergo overdue engine work.
- The dry dock and repair of M/V Col. Frank X. Armiger has been further delayed. We are hopeful that the vessel will be available in time for the Carnival Season. It is now expected to be complete in late December.
- The bid for the re-propulsion of M/V Thomas Jefferson was again rejected. We will now bid a normal dry dock for the vessel in order to have it available earlier next year.

Contact Information

| | |
|--|--|
| <i>Bertrand Donnes,</i> <i>Operations</i> | <i>Herbert Hotard,</i> <i>Maintenance</i> |
| Bertrand.Donnes@LA.gov (504) 376-8114 | Herbert.Hotard@LA.gov (504) 376-8161 |

2001 Mardi Gras Boulevard
Post Office Box 6297
New Orleans, LA 70174-6297

The Crescent City Connection Division engineering department is responsible for monitoring and tracking marine, bridge, and roadway projects being planned or constructed within the CCCD jurisdiction.

Projects with a construction cost of less than \$500,000 are usually managed by the CCCD engineering department. Letter bids are used for these projects due to the size and specialty needs.

Projects with an estimated construction cost greater than \$500,000 are managed through the DOTD headquarters and let through the typical DOTD headquarters bid letting process.

The Engineering department staff includes one Engineer Intern (EI), one staff engineer and one part-time student worker.

Currently there are multiple projects being tracked by the engineering department. Coordination is ongoing internally and with DOTD headquarters and DOTD District 02 offices.

The projects are categorized by facility improvement projects, ferry projects, ferry terminal projects, and highway projects. An update of each major highway project is provided within this report.

Facility Improvement Projects*

- Roofing of Police Station/Administration Building: Plans being prepared by DOTD architectural staff.
- Completion of punch list items for the CCCD Administration Building under a Performance Bond: 90% complete.
- Currently preparing landscape plans for CCCD Administration Building and landscaping around Vehicle Maintenance Building.

Ferry Projects*

- Thomas Jefferson Repropulsion: Bid opened October 26, 2011. One bid received and it was rejected. Project re-advertised in November, 2011, and the December 14 bids were rejected. Project has been cancelled, and specifications for regular dry docking of Thomas Jefferson are currently being prepared.
- Porterie Repropulsion: Project has been can-

celled. Regular dry docking is planned for next year.

- CCCD Marine Vessels Radar System Upgrades: Bids opened October 26, 2011. One bid received and it was rejected. Project re-advertised in November, 2011, and December 14 bids were rejected. The project scope has changed, and a third re-bid is planned for March 14, 2012.
- Dry docking of M/V Armiger: Notice to Proceed was issued October 5, 2011. Project is 90% complete.
- M/V Levy and M/V Stumpf compressor replacements: Project awarded in October 2011. Replacement of the M/V Levy compressor is complete. M/V Stumpf will receive repairs during vessel downtime.

Ferry Terminal Projects

- Marine Maintenance Facility Repairs*: Notice To Proceed issued for January 9, 2012. 50% complete.
- Variable Message Signs at all landings**: Bid requests have been posted.

Highway Projects

- Peters Road Extension**
- MacArthur Interchange (Peters Road Ramps)**
- 4th Street Extension**
- Barataria Blvd. Widening (Lapalco to Ames)***
- Gen. DeGaulle Dr. Traffic Improvements***
- Gen. DeGaulle Dr. Drainage Improvements***

*Being led by CCCD.

**Under development and being led by DOTD headquarters.

***In construction phase and being led by DOTD District 02.

Contact Information

Lucy Kimbeng, P.E.
Staff Engineer
Lucy.Kimbeng@LA.gov
(504) 376-8237

2001 Mardi Gras Boulevard
Post Office Box 6297
New Orleans, LA 70174-6297

HNTB CCCD TRUST INDENTURE & ENGINEERING PROJECT

Program Detail

HNTB is contracted by DOTD to provide technical expertise and advisory services to the CCCD tolling operations, and high level consultation to the State of Louisiana governing officials so they can make informed decisions on how to manage transportation and toll-related issues and concerns.

The HNTB team was provided notice to proceed with a four-year contract on November 1, 2010. Seven Task Orders under the contract are underway and are summarized below.

Task Order 1 *Program Management & Administrative Services*

Perform general administrative, accounting, and engineering support for CCCD. Major deliverables include project tracking system, revised/new Emergency Operations Plan, CCCD audit findings tracking system, and meeting preparation as requested by DOTD.

Task Order 2 *Staff Augmentation*

Provide staff augmentation as requested by DOTD. Currently, CCCD staff is augmented by 8 accounting specialists and 1 toll technical advisor.

Task Order 3 *Sunsetting of Tolls*

Provide the evaluation, creation, and all support/assistance required for successful implementation of sunseting action plan as directed by DOTD. This Task Order is currently on hold pending input from the Task Force.

Task Order 4 *Financial Analysis & Process Documentation*

Evaluate the revenue streams and accounting processes related to the CCCD toll facility and operations in order to conduct internal audit and process documentation. Final deliverable, which includes a Findings and Recommendations Report, was prepared and submitted at the April CCCD Oversight Authority Committee meeting on April 27, 2011.

Task Order 5 *Gen. DeGaulle Construction Services (Lighting & Structural)*

Provide general lighting construction services for the Gen. DeGaulle traffic improvement project currently under construction. Also included within this task is reviewing bridge shop drawings and Request for Information (RFI)s.

Task Order 6 *Repropulsion for M/V Thomas Jefferson and M/V Porterie*

Finalize plans and specifications for incorporation of new propulsion systems. Also, provide Construction and Engineering Inspection (CEI) services for the conversions.

Task Order 7 *Data Entry for Marine Software*

Update and organize data as part of NS5 computer software as an asset management tool with regards to the fleet of ferry vessels owned by CCCD.

continued on next page

HNTB CCCD TRUST INDENTURE & ENGINEERING PROJECT

Continued from page 10

11

Task Order 8 *ETCC Oversight and Implementation*

Perform monitoring, management and oversight for the implementation of the ETCC Settlement Agreement, out-of-scope premaintenance tasks, and further integration of the electronic toll system.

Task Orders – Executed and Under Development

| Agreement | Description | Notice to Proceed | Amount not to exceed | Duration | Contract end date |
|------------------|--|--------------------------|-----------------------------|-----------------|--------------------------|
| Master | | 11/01/2010 | \$5,687,500 | 4 years | 10/31/2014 |
| TO No. 1 | Program Management & Administration | 12/02/2010 | \$747,650 | 1 1/2 years | 6/30/2012 |
| Supplemental* | Data Entry for Marine Software Support | 11/09/2011 | \$55,449 | TBD | TBD |
| TO No. 2 | Staff Augmentation | 01/06/2011 | \$1,411,720 | 1 1/2 years | 06/30/2012 |
| TO No. 3 | Sunsetting of Tolls | 01/04/2011 | \$1,246,668 | 1 1/2 years | 06/30/2012 |
| TO No. 4 | Financial Analysis & Process Documentation | 01/24/2011 | \$612,146 | 1 1/2 years | 06/30/2012 |
| TO No. 5 | Gen. DeGaulle Construction Services | 04/18/2011 | \$64,026 | 12 months | 04/18/2012 |
| TO No. 6 | Repropulsion for Marine Vessels | 07/25/2011 | \$244,267 | 340 days | 06/30/2012 |
| TO No. 7 | Data Entry For Marine Software | 08/10/2011 | \$25,096 | 90 days | 11/08/2011 |
| TO No. 8 | Oversight of ETCC System Implementation | 08/08/2011 | \$389,887 | 365 days | 08/07/2012 |
| TO No. TBD* | Ferry Terminal Repairs | TBD | TBD | TBD | TBD |

*New contract or contract modification under development.

M A J O R
C A P I T A L
P R O J E C T S

JANUARY 2012

PETERS ROAD UPGRADE & EXTENSION

From Engineers Road to Belle Chasse Highway (LA 23)

13

Corridor Details

Extension of Peters Road (LA 3017) from Engineers Road to Belle Chasse Highway (LA 23) in Plaquemines Parish. The project would provide a direct connection between Jefferson and Plaquemines parishes with an elevated crossing over the Intracoastal Waterway.

DOTD, New Orleans Regional Planning Commission (RPC), Jefferson Parish, and Plaquemines Parish have been actively involved throughout the planning and engineering phases of the project.

The overall project is divided into three phases and each is considered a separate project under DOTD's project tracking system:

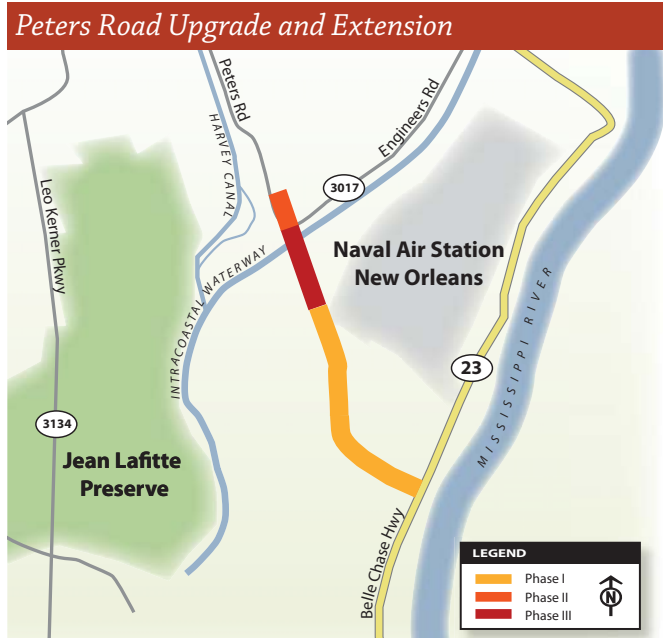
- Phase I – Approximately three miles of roadway that begins at the southern end of LA 23/Walker Road intersection and extends along Walker Road turning eastward along the Barriere Canal and ending just east of the borrow pits.
- Phase II – Includes the approach roadways and the interchange with LA 3017 on the north side of the Intracoastal Waterway. Two bridges over Barataria Canal are involved with this phase.
- Phase III – Includes the bridge over the Intracoastal Waterway along with the remaining south approach roadway from the bridge to the end of Phase I.

Milestones

The Final Environmental Assessment (EA) and Finding of No Significant Impact (FONSI) for the overall project were completed in December 2004. A supplemental EA and FONSI were approved in 2009 for consideration of a revised alternative at existing Peters Road tie-in.

Corridor Updates

- Phase I – Project was let for bidding on September 28, 2011. The contractor is Fenton Excavating & Construction, Inc. Project is commencing with the contractor performing



surveys and layout. The construction cost is \$15.1 million.

- Phase II – Currently under final design. The estimated construction cost is \$18 million.
- Phase III – Currently under final design. The estimated construction cost is \$63 million.

Next Steps

- Phase I – Construction in the field is expected to begin in January 2012.
- Phase II – Identify funding sources for final design and construction.
- Phase III – Identify funding sources for final design and construction.

Contact Information

Nelson Capote, P.E.
Project Engineer
Nelson.Capote@LA.gov
(504) 361-6495

Post Office Box 9180
Bridge City, LA 70096

MACARTHUR INTERCHANGE

Peters Road Ramps

14

Corridor Details

This project correlates with the proposed Peters Road project currently under development. The MacArthur Interchange project has been a collective effort by DOTD, Crescent City Connection Division (CCCD), Jefferson Parish, and the New Orleans Regional Planning Commission (RPC).

The project includes demolition of one existing ramp and one entrance ramp. Additionally, construction of four (4) new ramps in two phases:

- Phase I - Westbound Lanes. This phase includes the following: relocated entrance ramp from Manhattan Blvd., exit ramp to Peters Rd./Harvey Canal Tunnel, and some at-grade roadway improvements.
- Phase II - Eastbound Lanes. This phase provides for a relocated exit ramp for Manhattan Blvd., entrance ramp from Peters Rd./Harvey Canal Tunnel, and some at grade roadway improvements.

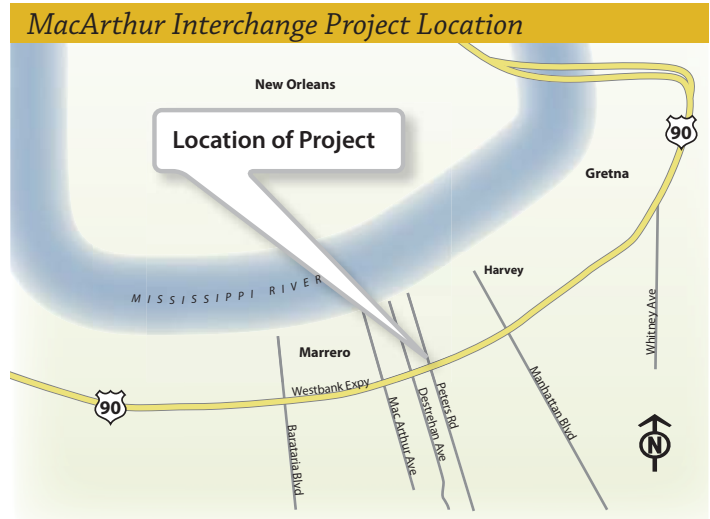
The overall project has the most implications on the ground level to Jefferson Parish as a result of how the ramps will interact with Manhattan and Barataria Boulevards. Therefore, CCCD entered into a CEA turning the design engineering management of the project over to Jefferson Parish. The funds are a mix of toll fees, state surplus and capital outlay dollars.

The Westbank Expressway (U.S. 90B) elevated portion was constructed 20 years ago with a unique design that now presents structural limitations. Although at that time it was considered state-of-the-art, the science of engineering has evolved.

Based on new inspection data of the Expressway, the MacArthur ramps, as currently designed, will need to be modified to be a more stand-alone structure or so that the ramps are constructed without a need to remove any portions of the existing bridge substructure. The project is currently undergoing a third-party review to modify the design appropriately.

DOTD will also add a bridge rehabilitation component to the scope of the existing MacArthur ramps project to reinforce the existing structure. By retrofitting the existing bridge structure, the state will increase the load or weight carrying capacity of the existing bridge.

In an effort to expedite the construction of this project, DOTD is reviewing the feasibility of con-



structing the road portion of the project separately from the bridge project, therefore allowing the state to accept bids on the road project in spring 2012 and the adjusted bridge project in fall 2012. The project is currently estimated to be completed in 2014.

Corridor Updates

- Phase I - Final plans are being reviewed. The estimated construction cost is \$20-30 million. (The majority of the construction will be funded by state surplus.)
- Phase II - The construction cost for this phase has not been estimated.

Next Steps

- Phase I – Scheduled for letting in Spring and Fall 2012.
- Phase II – Will be decided following completion of Phase I.

Contact Information

Li Yang, P.E.
Project Manager
Li.Yang@LA.gov
(225) 379-1456

DOTD, 1201 Capitol Access Road
Baton Rouge, LA 70802

4TH STREET EXTENSION

Corridor Details

This project involves extending Fourth Street from its intersection with Fried Street to its intersection with Burmaster Street. The new alignment will utilize an abandoned railroad right-of-way.

The project scope includes the Governor Hall Connector (GHC) which was included in the Environmental Assessment (EA). The GHC will provide access from First Street to the 4th Street Extension directly, allowing trucks to access the new road without driving on any of the neighborhood streets. FHWA has approved moving forward with including the GHC as part of the project.

The estimated cost is \$10.5 million (without the GHC) and is partially funded by the CCCD, RPC, FHWA, DOTD, and the City of Gretna. The CCCD contributed \$3 million towards preconstruction services. Any remaining funds from the \$3 million after the environmental planning and engineering design services are complete can be utilized in the construction portion of the project, in particular, the GHC which is not eligible for federal funding.

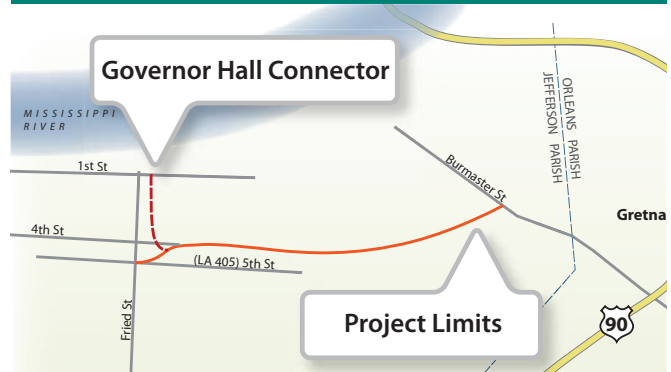
Milestones

- The Final EA and Finding of No Significant Impact (FONSI) was issued in July 2003 and re-evaluated in December 2007 and July 2011.
- Originally scheduled to be let in the summer of 2011; the addition of the GHC will introduce delays if the two segments are constructed at one time. The new letting schedule is dependent on the timeline of GHC engineering, right-of-way acquisition, environmental issues, permitting and the availability of the STP>200k funding from the RPC.

Corridor Updates

- Final plans for the original project are approximately 90% complete.
- DOTD is waiting for the City of Gretna to provide construction plans showing the required

4th Street Extension Project Location



right-of-way. From these construction plans, DOTD will be able to prepare a supplement for the right-of-way maps to be amended. The City and DOTD will finish acquiring the right-of-way needed for the original project.

Next Steps

- Finish the plans (from the Advanced Check Print review)
- City of Gretna to begin acquisition and environmental clearance process of required right-of-way needed for the GHC.
- Finalize road swappage agreement, revise right-of-way maps incorporating two outstanding parcels, acquire the outstanding parcels, obtain the railroad permit and obtain the utility agreements.
- Continue coordination between DOTD, the City of Gretna, and the railroad related to a new railroad crossing.

Contact Information

Laura Riggs, P.E.
Project Manager
Laura.Riggs@LA.gov
(225) 379-1525

DOTD, 1201 Capitol Access Road
Baton Rouge, LA 70802

BARATARIA BOULEVARD (LA 45) WIDENING

Lapalco Boulevard to Ames Boulevard

16

Corridor Details

This project widened Barataria Boulevard (LA 45), from Lapalco Boulevard to Ames Boulevard, from 4 to 6 lanes.

One lane was added in each direction by reducing the width of the median to create a six-lane roadway.

The additional lane in the southbound direction begins at the Lapalco Boulevard intersection and terminates as a left turn only lane onto Ames Boulevard. The third lane in the northbound direction begins at LA 3134 (Leo Kerner Parkway), formerly Lafitte-Larose Highway, as an extension of the right turn lane from LA 3134. Motorists turning right from Leo Kerner Parkway to northbound Barataria Boulevard will no longer have to yield as they enter Barataria Boulevard.

Milestones

Final plans were complete in 2009 by District 02. Project was let in November 2010, and contracted with Byron E. Talbot Contractor, Inc.

Corridor Updates

Widening work has been completed and pavement striping is underway. The project began January 31, 2011. Final inspection was performed on October 7, 2011. The contractor is currently working on the punch list developed from the final inspection. Items from the punch list are expected to be complete by early January.

Total project cost is \$3.44 million.



Contact Information

Nelson Capote, P.E.
Project Engineer
Nelson.Capote@LA.gov
(504) 361-6495

Post Office Box 9180
Bridge City, LA 70096-9180

GENERAL DEGAULLE

Traffic Improvements

Corridor Details

The project is approximately 1.6 miles in length and is located along General DeGaulle Drive on LA 428.

A primary goal of the project is to widen General DeGaulle Drive westbound to accommodate additional lanes of through traffic from just west of Shirley Drive to Rue Parc Fontaine.

Other goals of the project include the following:

- New signals at Shirley, Westbend/Garden Oaks Drive, General MacArthur Boulevard, Behrman Place, and Holiday Drive
- Improving accessibility for pedestrians crossing at signalized intersections
- Updating roadway lighting system along westbound General DeGaulle Drive
- Providing a U-turn along General DeGaulle Drive at Rue Parc Fontaine
- Realigning General DeGaulle Drive eastbound at Behrman Place
- Widening an existing bridge over Algiers Canal between General Collins Avenue and Holiday Drive

Milestones

Final Plans were originally issued in September 2005 just weeks following the arrival of Hurricane Katrina. Due to Post-Katrina needs from 2005 to present, the project was placed on hold until funding was allocated in 2010. Final Plans have been revised based on current DOTD standards and were re-issued in January 2011.

General DeGaulle Project Location



Corridor Updates

Project is 67% complete as of December 2011. Project construction cost is estimated at \$6.7 million.

Next Steps

Construction is expected to last less than one year, with completion scheduled for 2012.

Contact Information

Nelson Capote, P.E.
Project Engineer
Nelson.Capote@LA.gov
(504) 361-6495
Post Office Box 9180
Bridge City, LA 70096-9180

GENERAL DEGAULLE

Drainage Improvements

General DeGaulle Drainage Improvement Project Location



Corridor Details

The project includes drainage improvements along the General DeGaulle Drive (LA 428) median and at various crossing streets from Wall Boulevard to Behrman Place.

Existing street crossings will be regraded to accommodate new drainage structures within the median and finished to tie into the new widening project previously mentioned (General DeGaulle Traffic Improvements).

Milestones

- Phase I has been completed with the opening of Behrman and MacArthur crossings.
- Phase II is underway with construction at both Life Center and Westbend crossings.

Corridor Updates

Project was let in December of 2009 and construction began soon after. Project is approximately 68 percent complete as of December 2011.

Next Steps

Construction is expected to last 2 years with completion in 2012.

Total project estimated cost is \$20.1 million.

Contact Information

Nelson Capote, P.E.
Project Engineer
Nelson.Capote@LA.gov
(504) 361-6495
Post Office Box 9180
Bridge City, LA 70096-9180

